



Morledge Street, Leicester, LE1 1TH

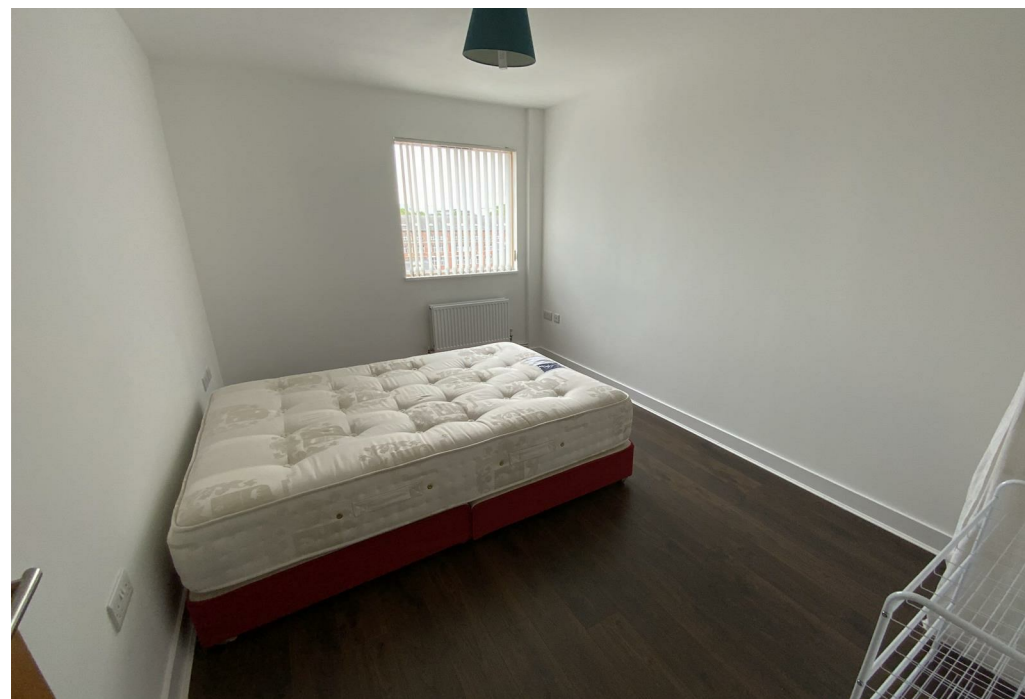


# Property Description

\*\*\* Available 17th December \*\*\* Deposit Alternative Available \*\*\* Phoenix Square sits right in the heart of Leicester's vibrant Cultural Quarter. This is a truly unique building offering comfortable, stylish and environmentally sustainable apartments, each sensitively designed and created to the highest standards of quality and design. Apartment 45 is unique in design and offers modern open plan living with fantastic views over the city. This furnished apartment is located on the fifth floor and is accessed via lift and stairs through a secure video entry system. The accommodation in brief comprises entrance hallway, spacious utility cupboard with washer dryer, modern open plan living area with south east facing balcony, high specification fitted kitchen with cappuccino units, integrated fridge freezer, microwave, electric oven, touch control electric hob and canopy extractor hood, contemporary high quality bathroom with shower over the bath, master bedroom with en-suite shower room and second double bedroom. Allocated car parking space. Leicester City Council Tax Band C. Energy Rating C.











## Key Features

- Available 17th December
- Deposit Alternative Available
- Leicester City Centre
- Apartment
- Two Bedrooms
- Allocated Parking Space
- Furnished
- Balcony Area
- Energy Rating C
- Council Tax Band C

**£1,050 PCM**